



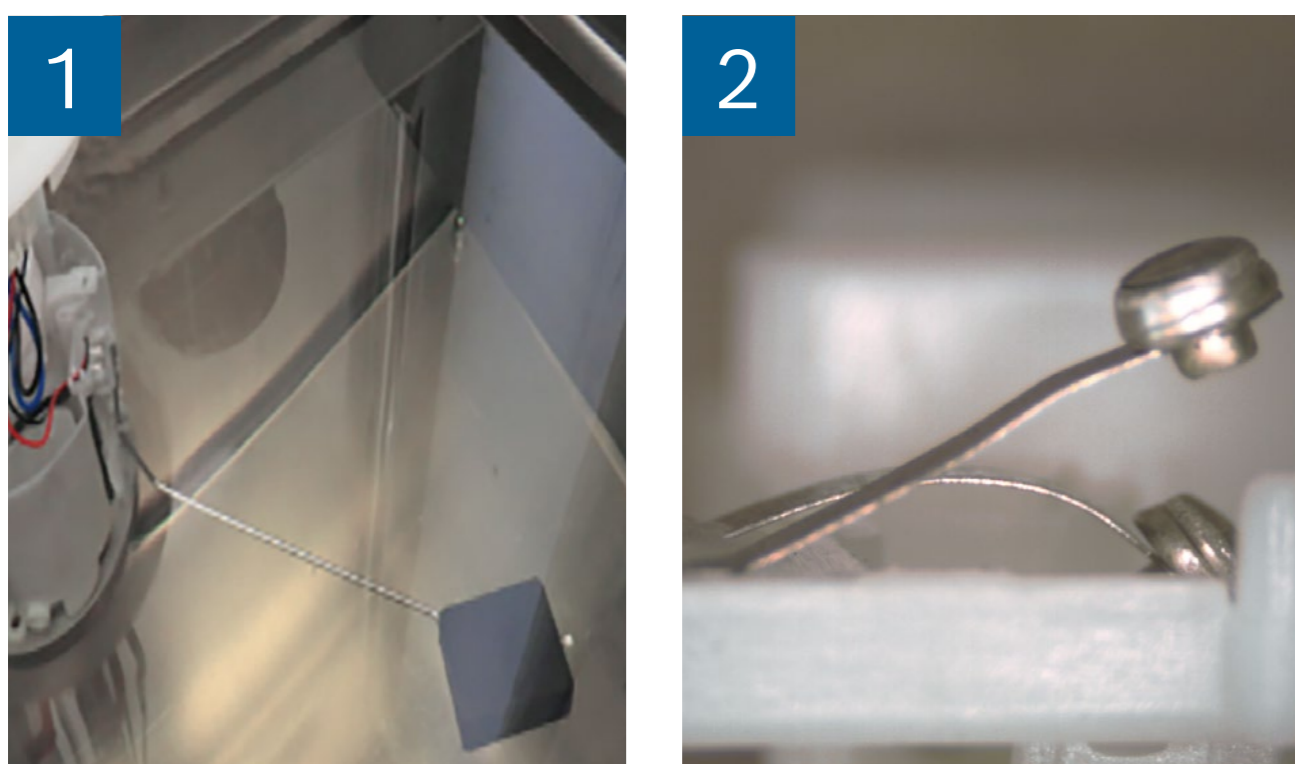
**Cheap today,
expensive tomorrow!**
Buying high-quality fuel supply
modules pays off.



BOSCH
Invented for life

Tested by Bosch: low-quality products from the aftermarket*

Failure or incorrect fuel gauge



Test result: defects detected

- 1 Level sensor got stuck
- 2 Bent sliding contacts of the level sensor

Possible consequences: what customers may expect

- ▶ Remaining distance displayed is not correct
- ▶ Warning lamp turns on although there is enough fuel at the tank – or: Warning lamp doesn't light up to indicate an empty tank

Fuel pump or level sensor are not working properly



Test result: defects detected

- ▶ Incorrectly mounted plugs or non-existent (they fell off during transport)

Possible consequences: what customers may expect

- ▶ No fuel level shown or engine doesn't start

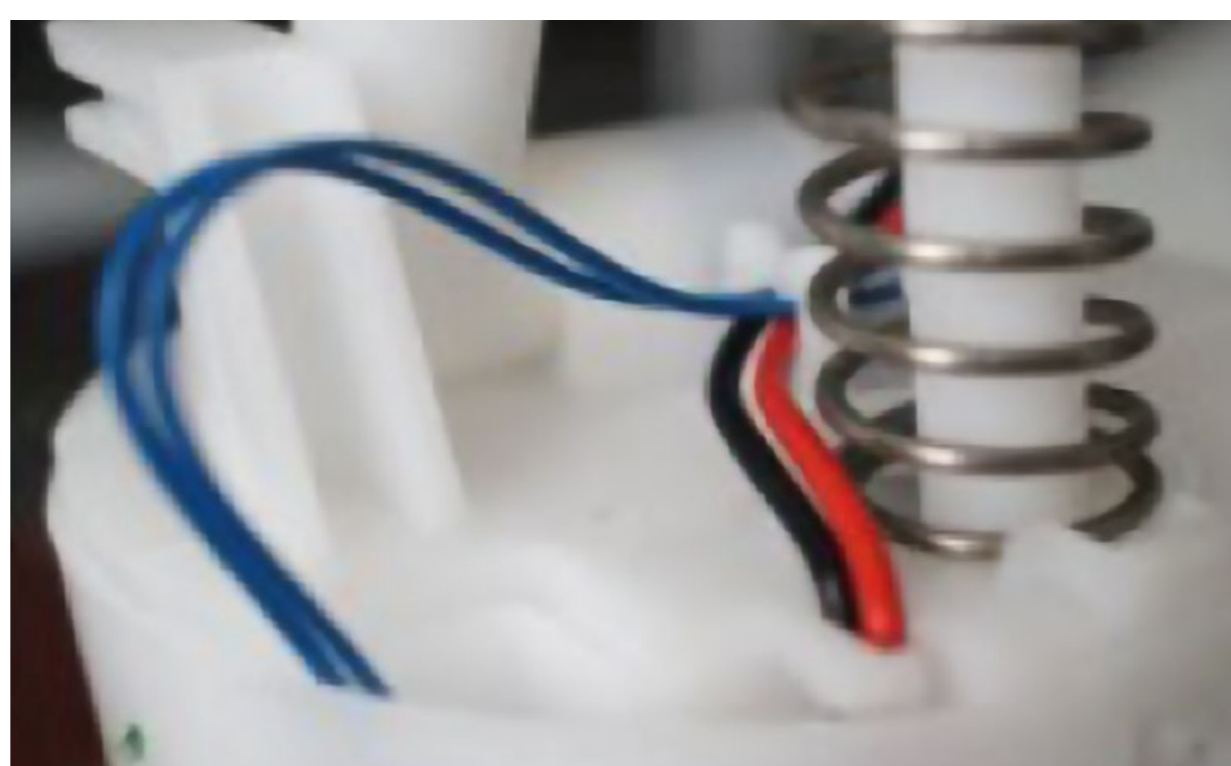
Plugs don't fit or transfer resistances



- ▶ Contact pins are not aligned

- ▶ No function or early failure of fuel pump and fuel-level sensor
- ▶ Vehicle breaks down without any prior warning

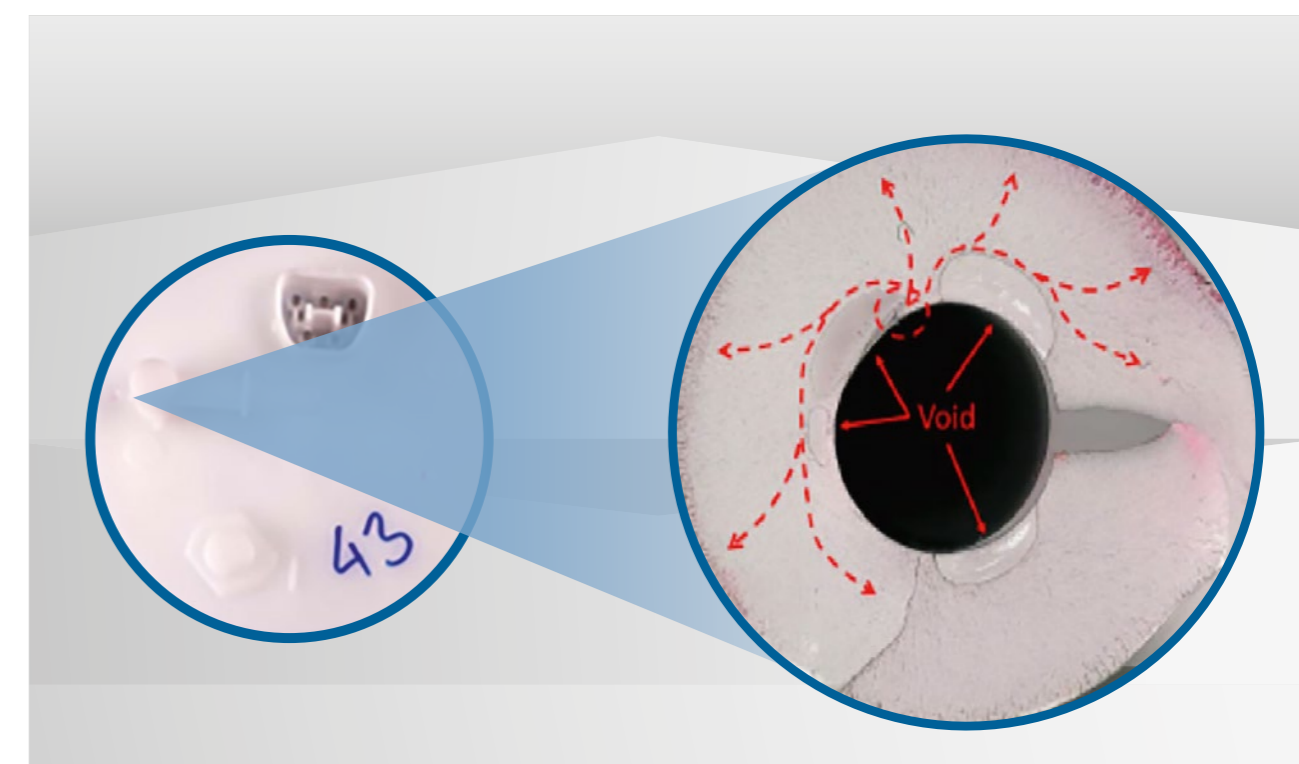
Worn insulation



- ▶ Incorrect electric wiring

- ▶ Short circuit, vehicle breaks down unexpectedly

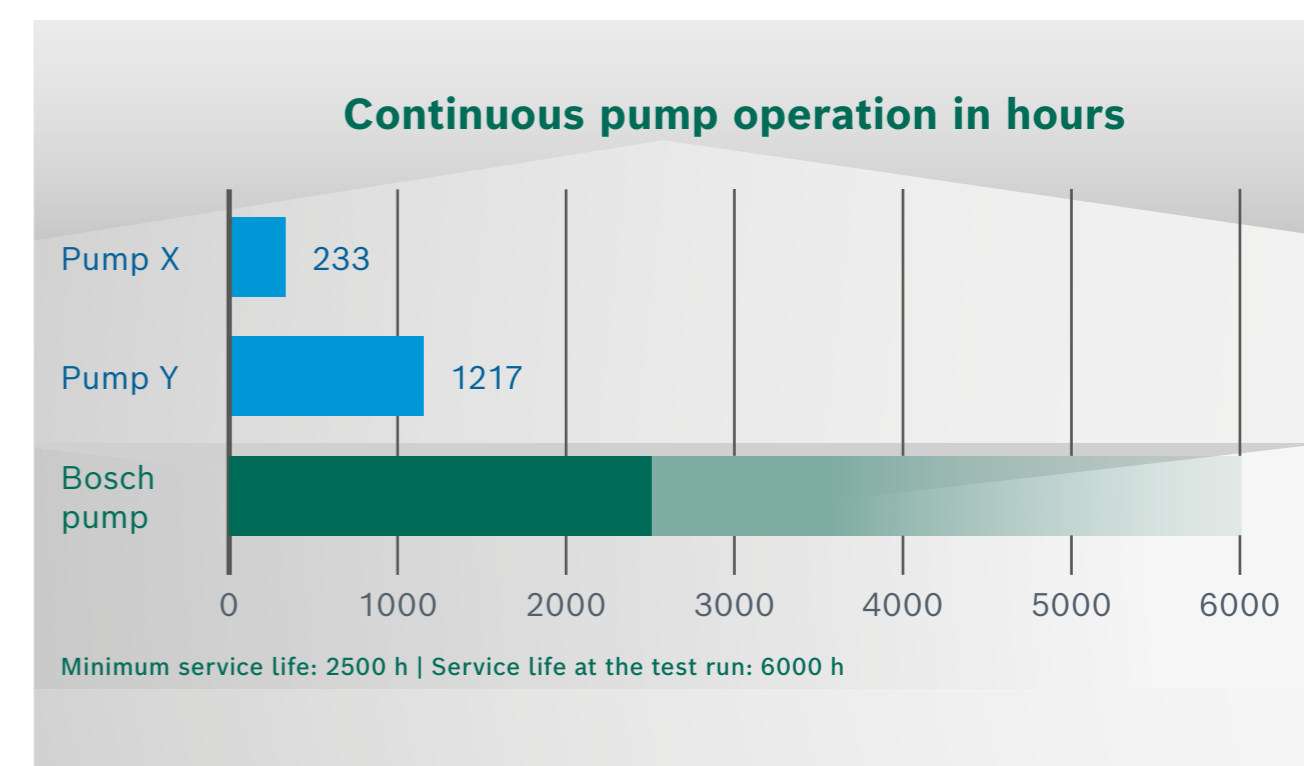
Leaks



- ▶ Wall thickness is too low or contains air pockets
- ▶ Plastic with invisible stress cracks

- ▶ Smell of fuel inside the cabin
- ▶ Danger caused by leaking fuel

Reduced service life



- ▶ Breakdowns after a short time (worn carbon brushes, defective commutator, coating coming off or similar issues etc.)

- ▶ Pump failure after a short operating time
- ▶ Engine breaks down suddenly and doesn't start anymore

*Bosch tested the function and design of different counterfeit fuel supply modules as well as the materials used.



Prevent stress for you and for your customers!
Rely on 50 years of Bosch experience in fuel supply modules.